

LEGEND

	ELECTRICAL SERVICES SWITCHBOARD.
	SWITCHBOARD / CONTROL PANEL NOT PROVIDED AS PART OF THE ELECTRICAL SUBCONTRACT.
	SINGLE POWER OUTLET.
	DOUBLE POWER OUTLET.
	DOUBLE POWER OUTLET C/W INTEGRAL USB CHARGERS.
	SPECIAL PURPOSE POWER OUTLET.
	SIGN OUTLET / CONNECTION.
	SINGLE PHASE ISOLATOR.
	THREE PHASE ISOLATOR.
	JUNCTION BOX.
	CONDUIT ROUTE.
	CABLE TRAY AS NOTED.
	ELECTRICAL PIT, TYPE AS NOTED.
	TELSTRA PIT.
	ELECTRICAL FLOOR BOX, TYPE AS NOTED.
	HAND DRYER CONNECTION.
	LIGHTING CONTROL SWITCH PANEL, TYPE AS NOTED.
	ONE-WAY LIGHT SWITCH.
	TWO-WAY LIGHT SWITCH.
	OCCUPANCY PRESENCE DETECTOR SWITCH.
	CIRCUIT LINE.
	SWITCH LINE.
	POWER CIRCUIT DESIGNATION. DENOTES DB AND CIRCUIT.
	LIGHTING CONTROL CHANNEL REFERENCE.
	MAIN DISTRIBUTION FRAME.
	ELECTRICAL EQUIPMENT AS NOTED.
	NBN NETWORK TERMINATION DEVICE.
	NBN PREMISES CONNECTION DEVICE.
	SUPPLY AUTHORITY CODE COMPLIANT LV MAXIMUM DEMAND TARIFF METER.
	METERING TEST BLOCK METER.
	CONTACTOR.
	GENERATION SIGNALLING DEVICE.
	DEMAND RESPONSE SITE CONTROLLER.
	MANUAL TRANSFER SWITCH.
	MAXIMUM DEMAND EV CTs.
	ELECTRIC VEHICLE CHARGING ISOLATION SWITCH.

LEGEND

	CIRCUIT BREAKER C/W SHORT TRIP.
	FUSE.
	SINGLE PHASE.
	THREE PHASE.
	CURRENT TRANSFORMER C/W REMOVABLE LINK.
	FUSE LINK.
	COMBINED FUSE SWITCH.
	CIRCUIT BREAKER. (ST) DESIGNATES THE CIRCUIT BREAKER IS TO BE PROVIDED WITH A SHUNT TRIP.
	ISOLATOR.
	RESIDUAL CURRENT DEVICE.
	CONTACTOR - NORMALLY OPEN.
	CONTACTOR - NORMALLY CLOSED.
	REFER TO DETAIL NOTED FOR THE AREA SHOWN HATCHED. ADDITIONAL OUTLETS & FITTINGS MAY BE SHOWN ON DETAIL.
	E1: GENERAL LED EMERGENCY LIGHT.
	EX: EMERGENCY LED EXIT LIGHT.
	Lx: LIGHT FITTING C/W NON-MAINTAINED EMERGENCY BATTERY PACK. TYPE AS NOTED.
	L1: OVERHEAD CUPBOARD LED STRIP LIGHT.
	L2: 600 x 600 RECESSED T-BAR FLAT PLATE.
	L3: 600 x 600 RECESSED FLAT PLATE.
	L4: AMENITY RECESSED DOWNLIGHT.
	L5: RECESSED DOWNLIGHT.
	L6: RECESSED DOWNLIGHT.
	L7: RECESSED DOWNLIGHT.
	L8: RECESSED DOWNLIGHT.
	L9: RECESSED DOWNLIGHT.
	L10: 150W SUSPENDED HIGH BAY FITTING.
	L11: 1200 LONG IP65 BATTEN C/W EMERGENCY PACK.
	L12: SURFACE MOUNTED CAR PARK LIGHT C/W MOVEMENT SENSOR.
	L13: 3800 LONG RECESSED EXTRUSION FITTING.
	L14: 1200 LONG IP65 SURFACE MOUNTED BATTEN C/W MOVEMENT SENSOR.
	L15: 1200 LONG IP65 SURFACE MOUNTED BATTEN.
	L16: WALL MOUNTED CARPARK LIGHT.
	L17: 50W CARPARK LIGHT ON A 9m HIGH POLE.
	L18: 150W CARPARK LIGHT ON A 9m HIGH POLE.
	L19: 200W SUSPENDED HIGH BAY FITTING.
	L23: 100W CARPARK LIGHT ON A 9m HIGH POLE.
	L24: 2 x 50W CARPARK LIGHTS ON A 9m HIGH POLE.
	L25: 1200 LONG BATTEN C/W LOCAL MANUAL SWITCH.

LEGEND

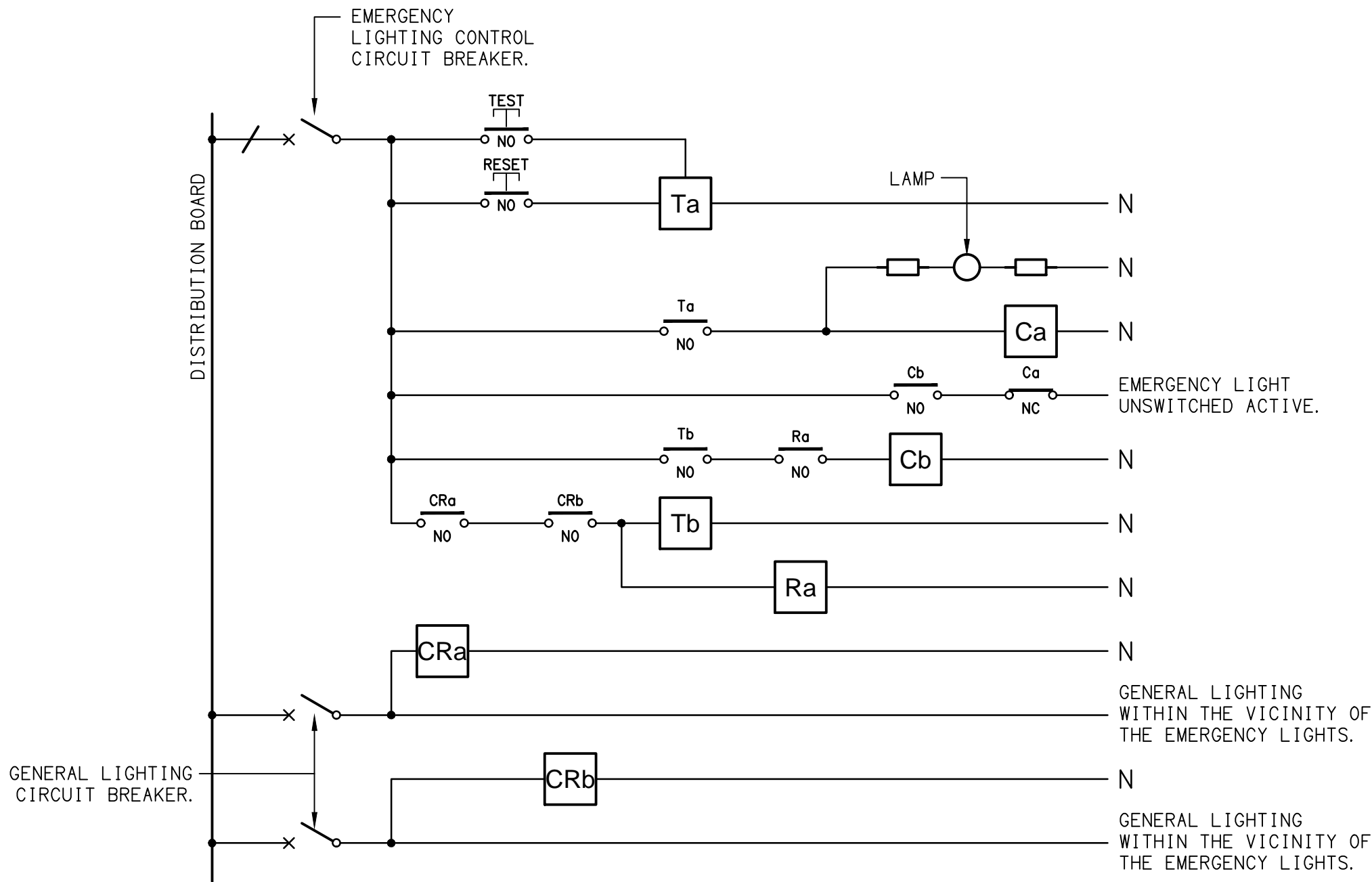
LT1: NOT USED.
LT2: NOT USED.
LT3: CAN DOWNLIGHT SURFACE MOUNT ON CEILING FEATURE.
LT4: RECESSED DOWNLIGHT.
LT5: SURFACE MOUNTED DOWNLIGHT.
LT6: SUSPENDED FEATURE PENDANT.
LT7: LED EXTRUSION STRIP LIGHT.
LT8: NOT USED.
LT9: RECESSED TRIMLESS CUSTOM EXTRUSION STRIP LIGHT.
LT10: SURFACE MOUNTED CAN DOWNLIGHT.

NOTE

ALL ELECTRICAL PENETRATIONS THROUGH THE ROOF SHEETING ARE TO BE IN LINE WITH THE STRUCTURAL OR MECHANICAL SERVICES PENETRATIONS TO AVOID DEDICATED FLASHINGS FOR THE ELECTRICAL SERVICES.

EQUIPMENT:

TEST - TEST PUSH BUTTON MOUNTED ON THE DISTRIBUTION BOARD ESCUTCHEON.  
RESET - RESET PUSH BUTTON MOUNTED ON THE DISTRIBUTION BOARD ESCUTCHEON.  
LAMP - AMBER TEST INDICATING LAMP MOUNTED ON THE DISTRIBUTION BOARD ESCUTCHEON.  
Ta - ADJUSTABLE 0-3 HOUR TIMED RELAY.  
Tb - 15 MINUTE RUN-ON TIMER TO OPERATE UPON THE RETURN OF MAINS POWER.  
Cx - CONTACTOR x.  
CRx - CONTROL RELAY x.  
Rx - RELAY x.

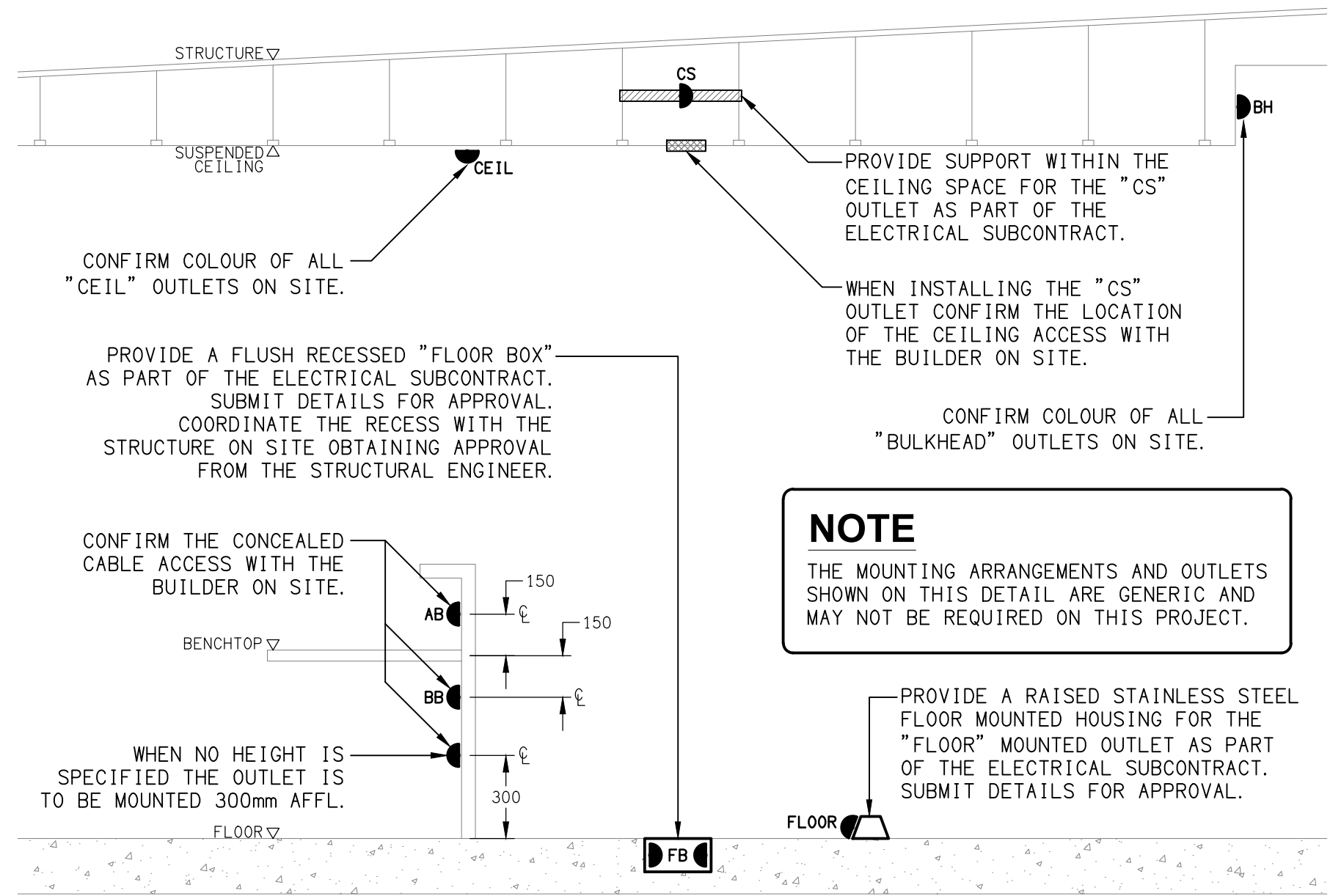


SCHEMATIC

EMERGENCY LIGHTING  
NOT TO SCALE

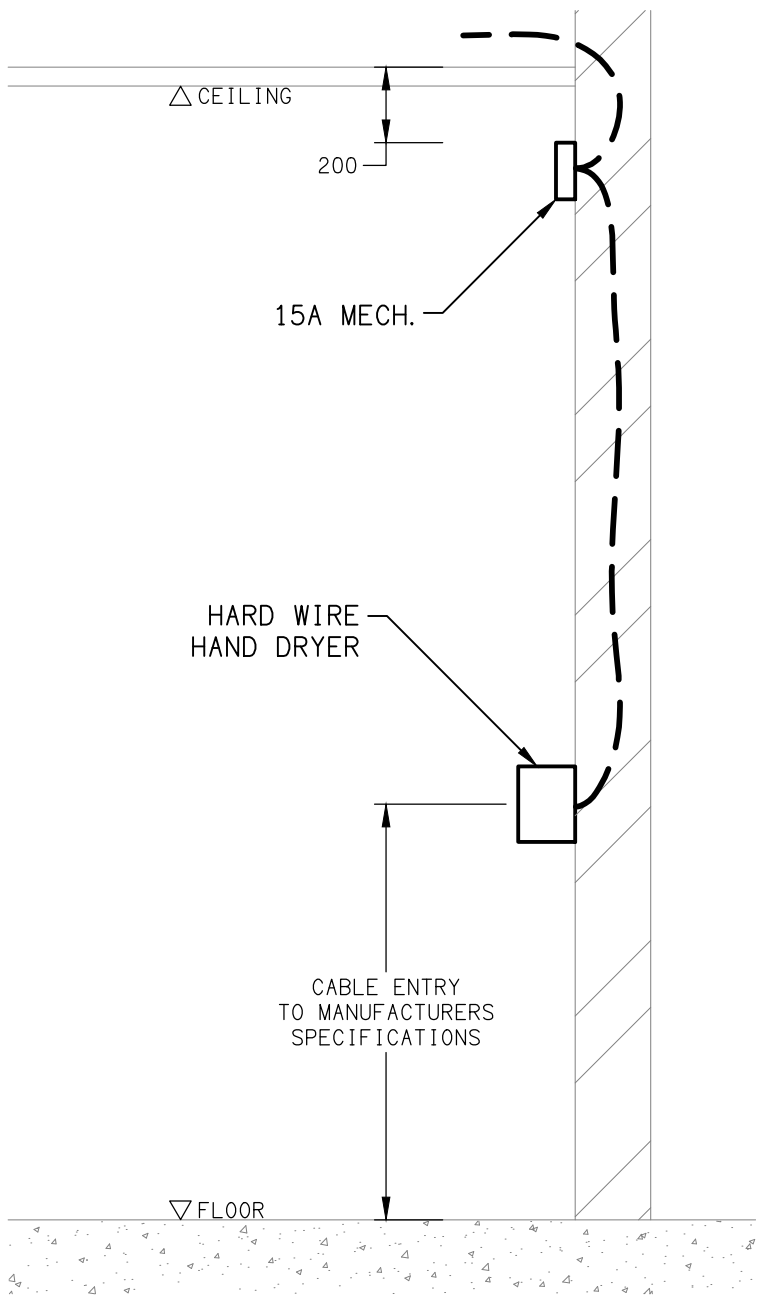
NOTES

1. THE EMERGENCY LIGHT UNSWITCHED ACTIVE / GENERAL LIGHTING SWITCHED ACTIVE CIRCUIT ARRANGEMENT AND CONTROL IS TYPICAL FOR ALL CIRCUITS SUPPLYING EMERGENCY LIGHTS.
2. PROVIDE ADDITIONAL CONTROL RELAYS (CRx) CONFIGURED AS PER CRa AND CRb FOR ALL ADDITIONAL LIGHTING CIRCUITS THAT SUPPLY LIGHTS IN THE VICINITY OF THE EMERGENCY LIGHTS.



DETAIL

TYPICAL OUTLET MOUNTINGS  
NOT TO SCALE



DETAIL

HAND DRYER CONNECTION  
NOT TO SCALE

ELECTRICAL DESIGN GROUP BRISBANE  
PTY LTD  
ACN 092 710 793

TRADING AS:  
ELECTRICAL DESIGN GROUP

THE COPYRIGHT OF THIS DRAWING  
REMAINS THE PROPERTY OF THE  
ELECTRICAL DESIGN GROUP.

USE FIGURED DIMENSIONS  
IN PREFERENCE TO SCALE.

ALL DIMENSIONS TO BE  
VERIFIED ONSITE.

rohrig  
constructions

Rohrig (Qld) Pty Ltd  
ABN 67 093 753 970  
QBSA LIC NO 740842  
250 Abbotsford Road, Bowen Hills Qld 4006  
PO Box 86 Albion DC Qld 4010  
T+61 (7) 3257 4411 F+61 (7) 3257 2211  
www.rohrig.com.au

ELECTRICAL DESIGN GROUP

ELECTRICAL BUILDING SERVICES CONSULTANTS

BRISBANE GOLD COAST

P.O.Box 15, Sherwood Q.4075  
Phone: (07) 3278 4375  
Email: brisbane@edg.net.au  
Web: www.edg.net.au

PROJECT:  
LLEWELLYN MOTORS SPRINGFIELD - LOT 34

LOT 34 AUGUSTA PARKWAY, AUGUSTINE HEIGHTS

DRAWING:  
ELECTRICAL SERVICES  
LEGEND & DETAILS

SCALE:  
NOT TO SCALE AT A1

PROJECT NO:  
C3396a

DRAWING NO:  
E01

REVISION:  
3